

*Silhouette*<sup>®</sup>  
AUTHENTIC EYEWEAR. SINCE 1964.

Mod. 8650



SILHOUETTE  
ADVENTURER



Property of Silhouette / © Silhouette

[www.silhouette.com](http://www.silhouette.com)

K 8650 00 0000 0000

**SILHOUETTE  
ADVENTURER  
Mod. 8650**

**SILHOUETTE  
ADVENTURER  
Mod. 8650**

**/40-6205**

GREEN  
metal parts dark green shiny,  
decoration titanium shiny,  
temple ends black, end pieces titanium shiny



**/50-6200**

**POL**  
POL GREY  
metal parts black chrome shiny,  
decoration chrome shiny,  
temple ends black, end pieces chrome shiny



**/50-6203**

GREY  
metal parts black chrome shiny,  
decoration chrome shiny,  
temple ends black, end pieces chrome shiny



**/60-6201**

**POL**  
POL BROWN  
metal parts ruthenium shiny,  
decoration gold shiny,  
temple ends brown transparent, end pieces gold shiny



**/60-6204**

BROWN  
metal parts ruthenium shiny,  
decoration gold shiny,  
temple ends brown transparent, end pieces gold shiny



**Kastensystem / boxing system**

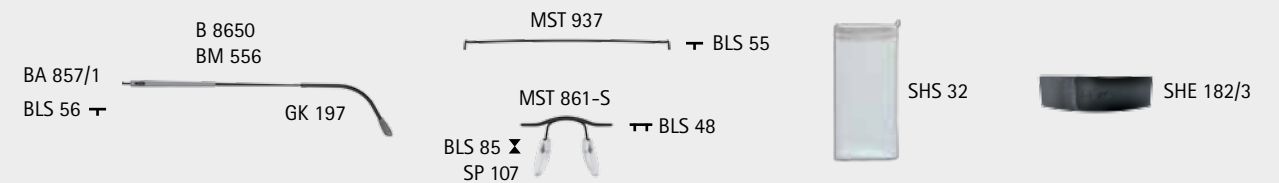
	mm	59 X 49 (23,12 cm <sup>2</sup> )
	mm	67
	mm	16
	mm	130
	°	21

Metallfassung aus High-Tech Titan  
Gläser: Polycarbonat  
Wölbung: Base 8  
100 % UV A-, B-, C-Schutz

Metal frame made of High-Tech Titanium  
Lenses: polycarbonate  
Curving: base 8  
100 % UV A-, B-, C-protection

Monture en métal fabriqués en High-Tech Titanium  
Verres: polycarbonate  
Courbure: base 8  
Protection de 100 % de UV A, B, C

**Ersatzteile / spare parts / pièces de rechange**



für optische Verglasung / for optical glazing / pour le montage des verres correcteurs



VH 65/1

BLS 58

BLS 44

technische Änderungen und Druckfehler vorbehalten  
specifications are subject to change without notice, no liability will be assumed for misprints  
sous réserve de modifications techniques et d'erreurs d'impression